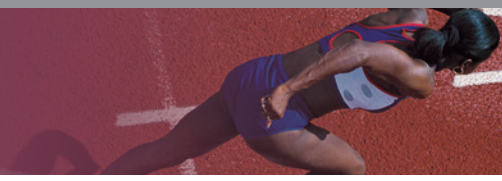


# PRINCE2® Foundation & Practitioner Blended Learning Gold Course



ILX Group's accredited PRINCE2® Practitioner Gold course contains all of the training and materials you need to attain both the Foundation and Practitioner qualifications in PRINCE2®. The course combines interactive multimedia training, workshops, video, practical exercises using our PRINCE2® project simulation, mock exam simulators and paper based exercises. Using the latest developments in e-learning the PRINCE2® Practitioner Gold course will provide you with the knowledge and understanding of the scope, content and structure of the PRINCE2® method to fully prepare you for the PRINCE2® Foundation exam. The highly interactive PRINCE2® Foundation exam simulator will give you a real-time opportunity to practice your exam technique prior to attempting the real exam.

In addition, our PRINCE2® project simulation will enable you to practice many of the core skills and develop your approach to taking the PRINCE2® Practitioner exam. Prior to taking the real exam, the PRINCE2® Practitioner exam simulator will give you the opportunity to practice your technique in a safe environment. You will have access to a PRINCE2® training expert throughout the entire programme and during the two-day workshop you will be given invaluable additional hints and tips on passing the PRINCE2® exams. Both examinations are taken during the two-day workshop.



## Benefits

- A virtual tutor who will guide you through your Practitioner learning
- A highly interactive and engaging PRINCE2® Project simulation
- A structured walkthrough of the entire PRINCE2® process model
- A full Practitioner exam simulator which results in exceptional pass rates
- A detailed exercise highlighting the key PRINCE2® manual references
- The course incorporates voice over, animation and graphics to add to the learning experience
- Less time taken to learn
- Increased retention of learning
- Increased control and visibility of progress and achievement
- Accessible from any location resulting in less travel costs



## Target Audience

This course conforms to the syllabus for those delegates wishing to gain both PRINCE2® Foundation & Practitioner level certifications. This course would benefit:

- Project & Programme Managers
- General Managers
- Team Managers and support staff
- Staff who will have a defined role within a project
- Project Management Consultants

## Why blended learning?

ILX combines interactive computer based training courses with add on workshops which have proven to significantly increase pass rates and students' confidence in the subject matter. Taking time out of the office for most people is difficult, which is why this solution works extremely well.

The initial part of the learning process is achieved by using a computer based approach with interactive CD-ROM. Each delegate is able to progress at his / her own pace on an individual basis, repeat sessions for a better understanding and, when ready, practice sample examination questions until proficient.

The second part of the learning process is tutor led in a short but effective workshop. This enables delegates to consolidate their understanding of the fundamental principles of the subject by applying their newly learnt knowledge to real world scenarios.

## What's included?

The package includes an interactive CD-ROM with multimedia training and in-built mock exam simulators for both Foundation and Practitioner exams. The combined e-learning and paper exercises take approximately 35–40 hours to complete. The workshop which includes both exams can be booked when students are ready and must be redeemed within 12 months of purchase.

- Leather binder complete with interactive CD-ROM
- Essential exercise book
- Practitioner exercises and mock exam papers
- PRINCE2™ manual
- PRINCE2™ Process model
- PRINCE2™ Foundation mock exam simulator
- 2 day revision workshop
- PRINCE2™ Foundation and Practitioner exam fees
- FAQ's and keyword search
- Full tutorial support



### Minimum Requirements

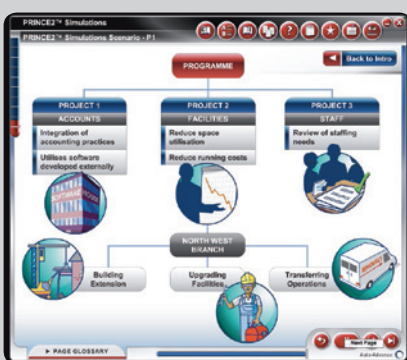
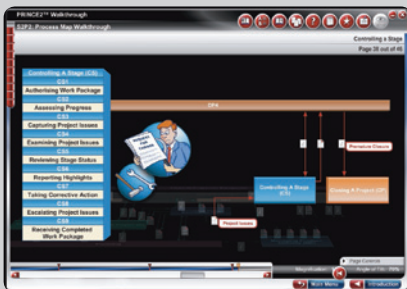
The course is designed to be run from a multimedia PC, with a CD-ROM and sound. The PC should have a minimum of 128MB memory and SVGA graphics.

For further information call ILX on **+61 (0)2 9006 1222** or email

**enquiries@ilxgroup.com.au**



# E-learning Course Synopsis



## PRINCE2® Foundation

### Course Introduction

- The history, need for and benefits of PRINCE2®

### PRINCE2® Overview and Principles

- Key principles of PRINCE2®
- The PRINCE2® Manual
- Structure of a PRINCE2® Project

### PRINCE2® Processes

- The PRINCE2® Process Model
- Process and Activities
- Information Flow
- Process Model Walkthrough

### PRINCE2® Themes – Part 1

- Business Case
- Organisation
- Quality
- Plans

### PRINCE2® Themes – Part 2

- Risk
- Change
- Progress

### PRINCE2® Case Study

- Example of a PRINCE2® project
- Printable PRINCE2® documents

### PRINCE2® Exam Technique

- How to approach the PRINCE2® Foundation Exam

### Mock Exam Simulator

- Featuring sample questions from the PRINCE2® Foundation Examination

### PLUS...

**The PRINCE2® Template Manager**  
A comprehensive collection of document templates to kick-start your implementation of PRINCE2®

## PRINCE2® Practitioner

### Introduction into PRINCE2® Practitioner

### PRINCE2® Process Model Walkthrough

### PRINCE2® Project Simulations

- PRINCE2® Project Scenarios
- Business Case Simulation
- Organisation Simulation
- Quality Simulation
- Product Breakdown Structure Simulation
- Management of Risk Simulation

### Marking up the PRINCE2® Manual

### Practical Practitioner Exercises

### Practitioner Exam Technique

### Exam Simulator

### Also includes...

- Comprehensive course notes
- Detailed exercises
- Exam questions, answers and marking guides
- Guide to exam technique
- Full technical support

For further information contact:  
ILX Group Pty Ltd, Darling Park, Tower 2, Level 20, 201 Sussex Street, Sydney, NSW 2000, Australia  
Telephone +61 (0)2 9006 1222 Fax +61 (0)2 9006 1010  
Email enquiries@ilxgroup.com.au or visit our web site at www.ilxgroup.com.au for the latest news and updates.

[www.prince2.com/au](http://www.prince2.com/au)